

WISCONSIN

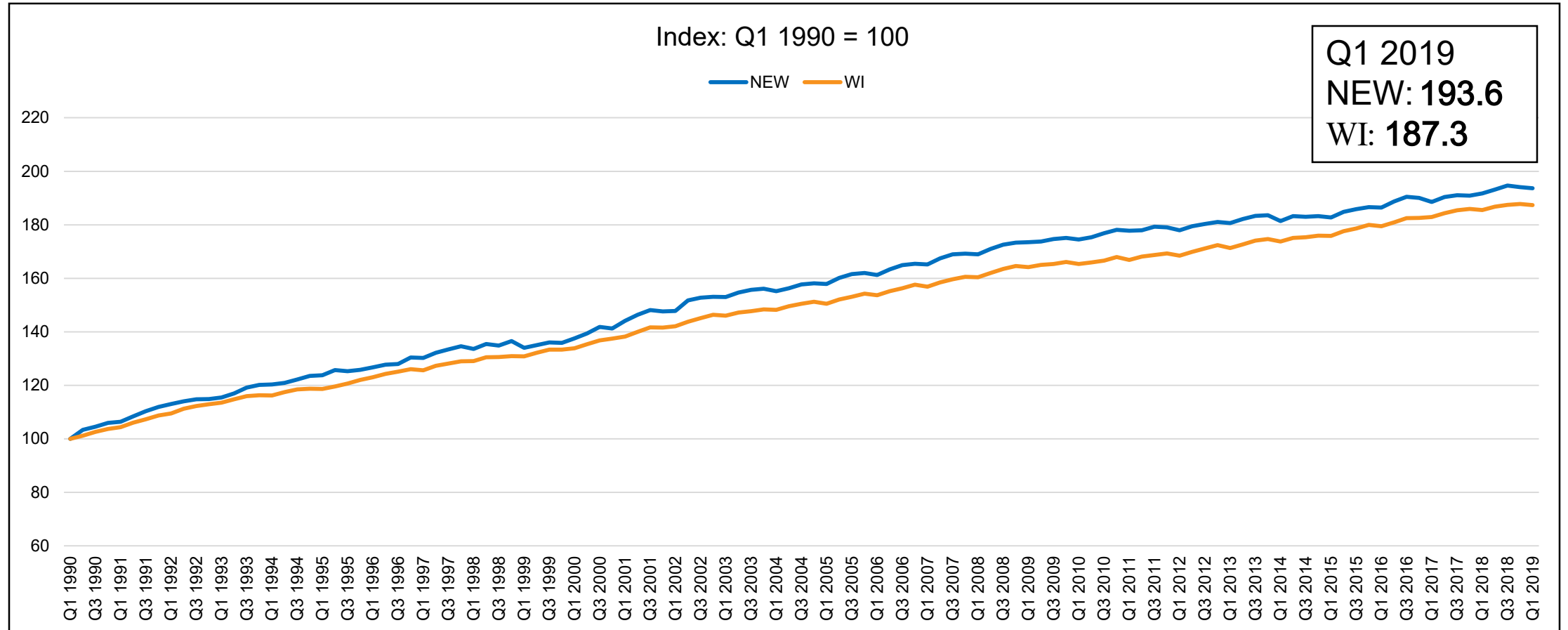


DWD

Regional Healthcare LMI

Ryan Long
Regional Economist

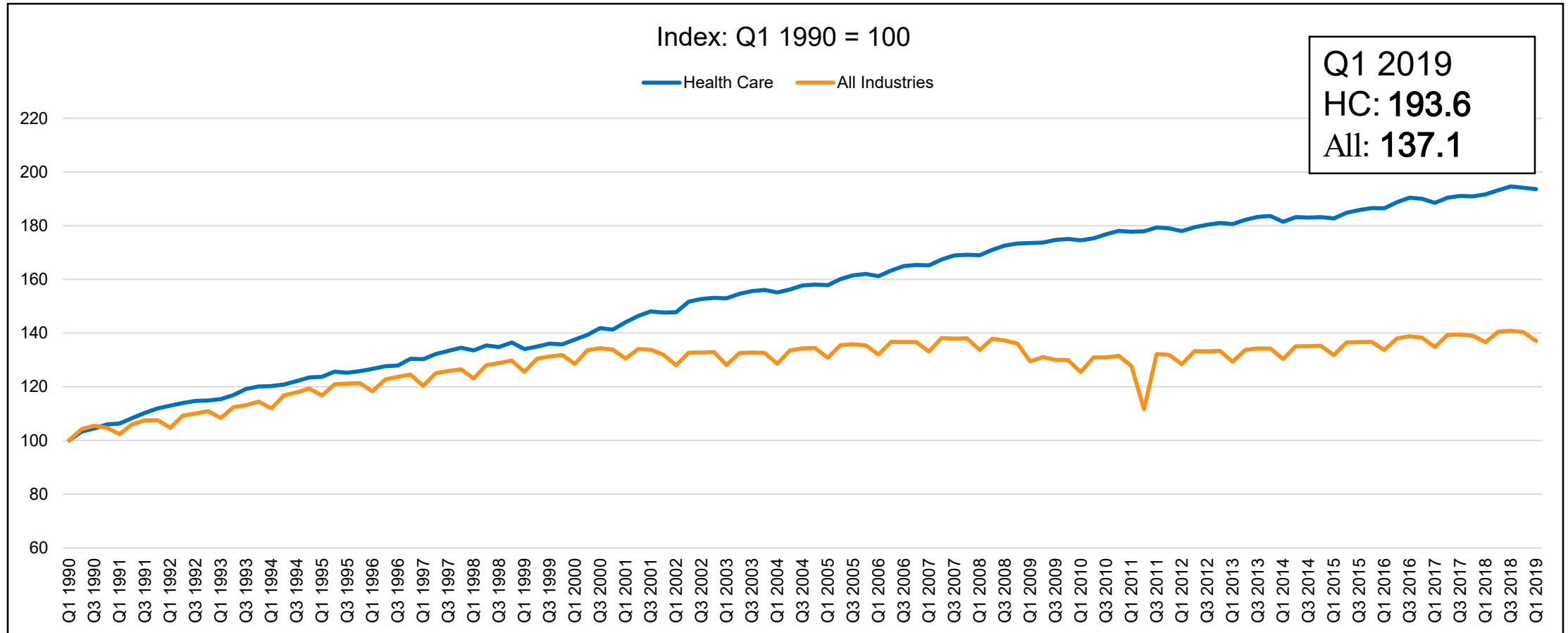
Local Health Care Employment



Source: Quarterly Workforce Indicators (QWI), US Census Bureau LEHD



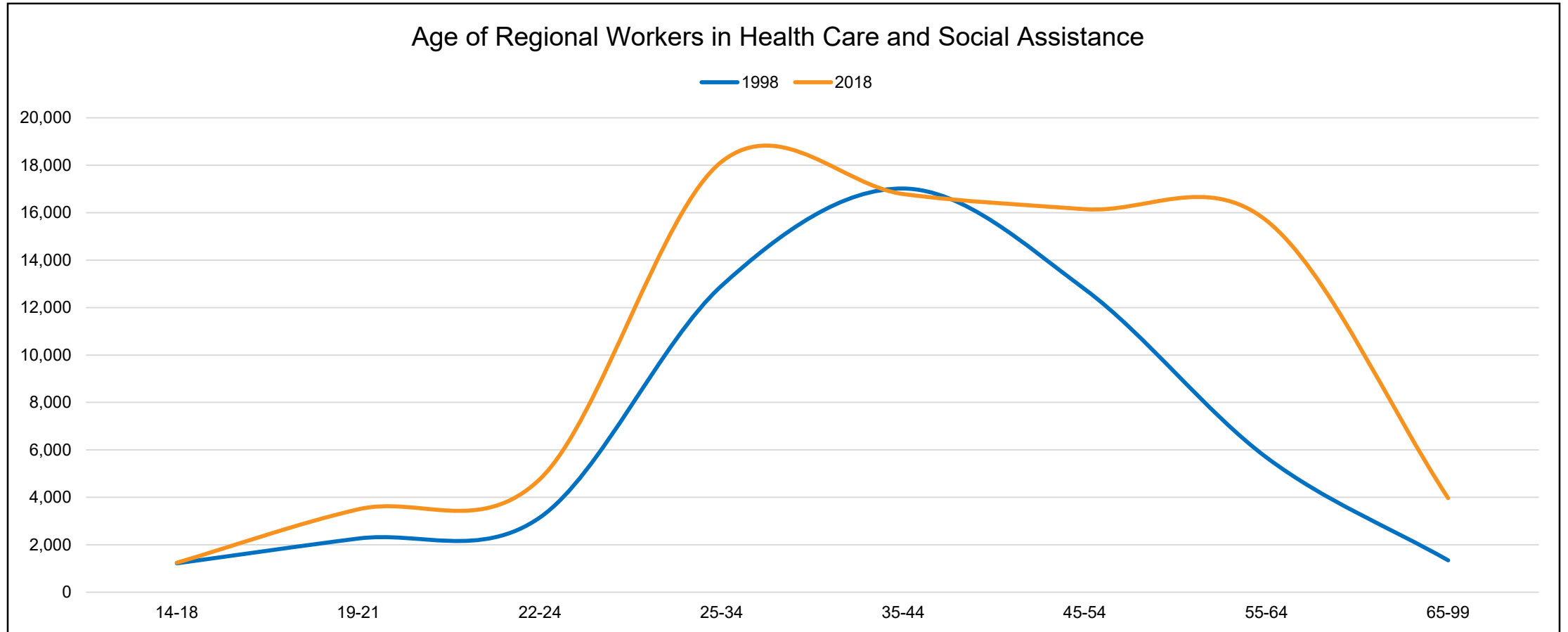
NEW HC Employment vs. All Industries



Source: Quarterly Workforce Indicators (QWI), US Census Bureau LEHD



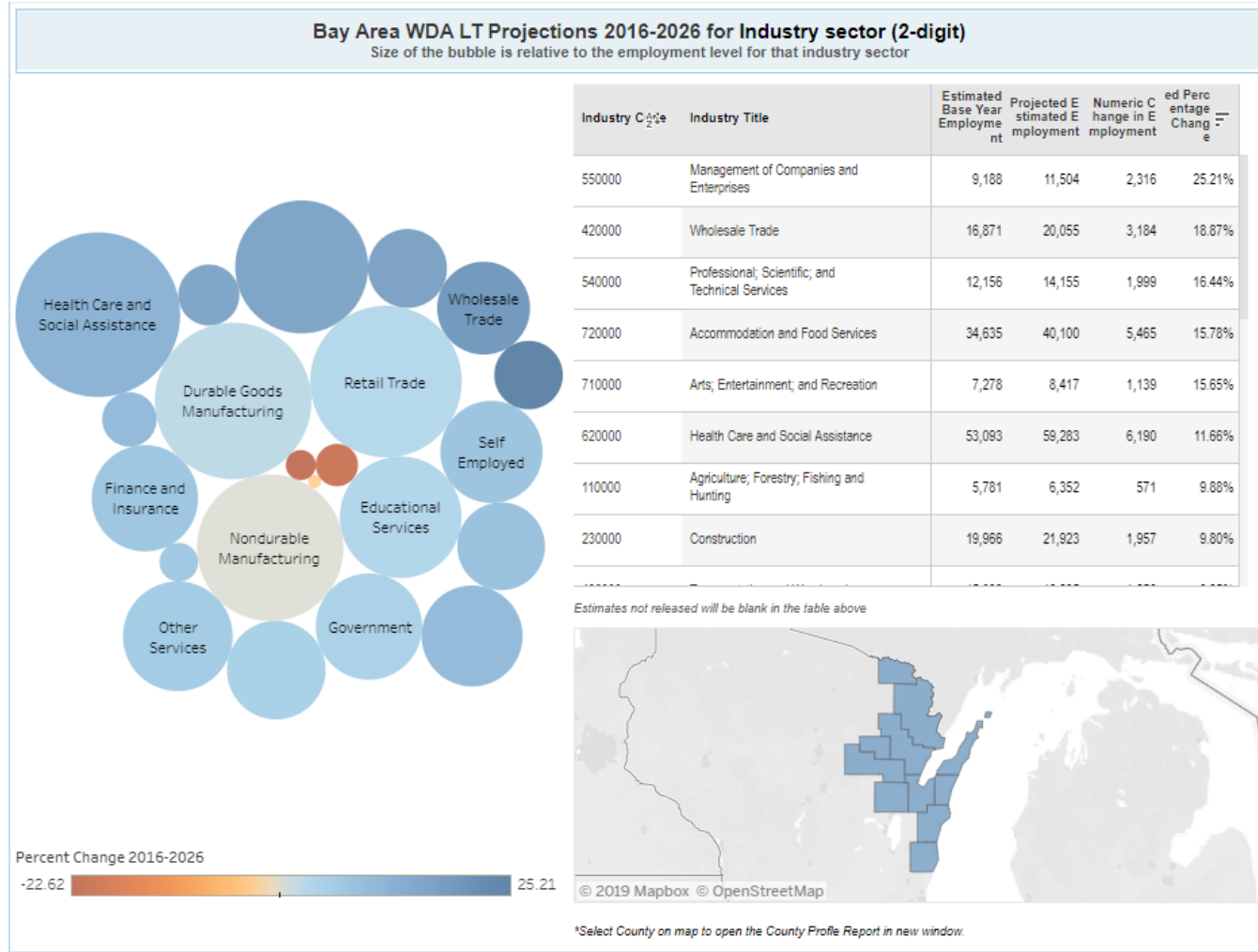
Local Demographics - Age



Source: Quarterly Workforce Indicators (QWI), US Census Bureau LEHD



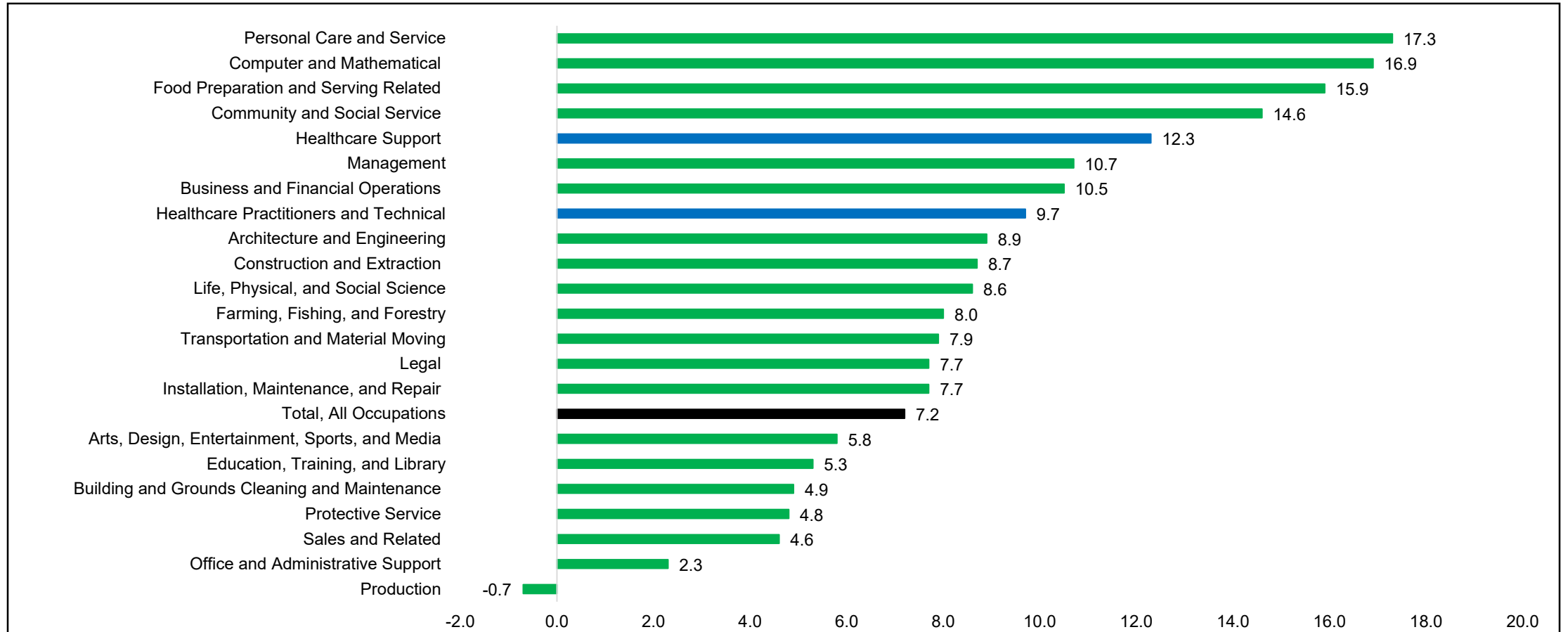
Bay Area Employment Projections



Source: OEA Projections, 2016-2026



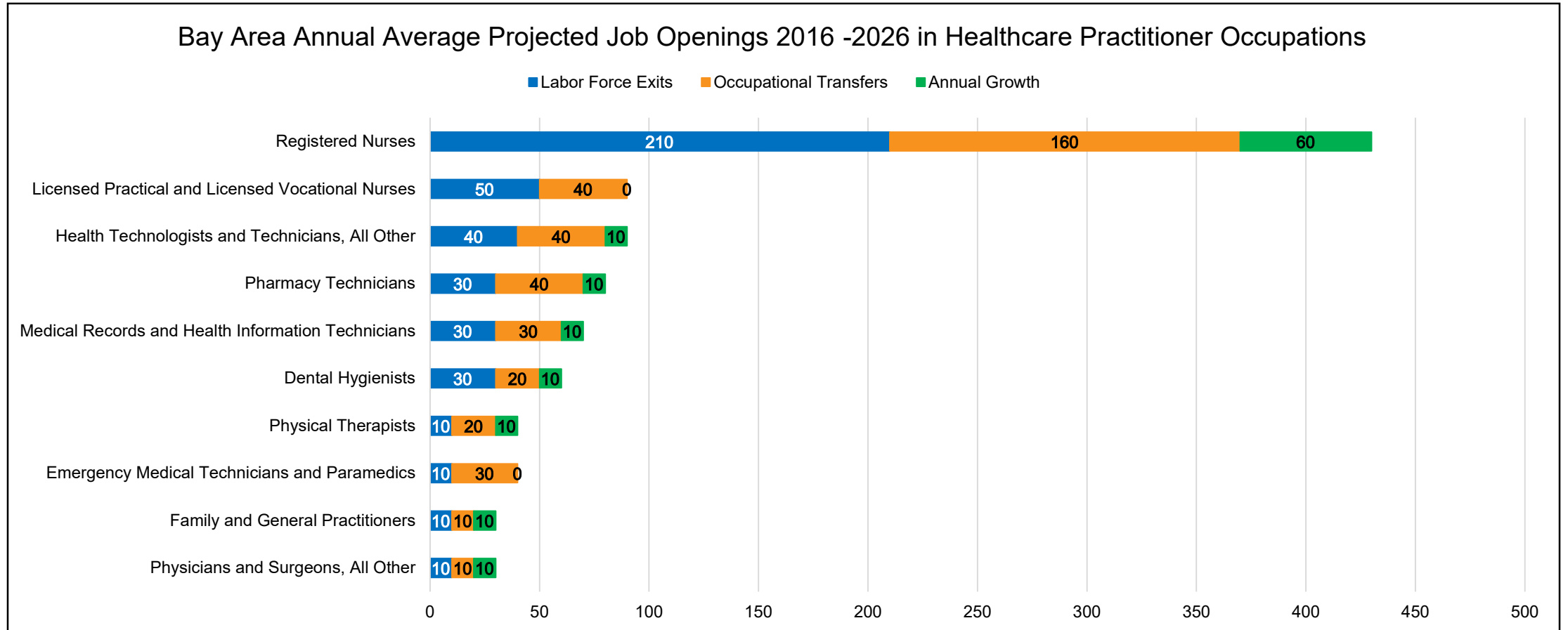
Bay Area Employment Projections



Source: OEA Projections, 2016-2026



Healthcare Openings



Source: OEA Projections, 2016-2026



Healthcare Wages

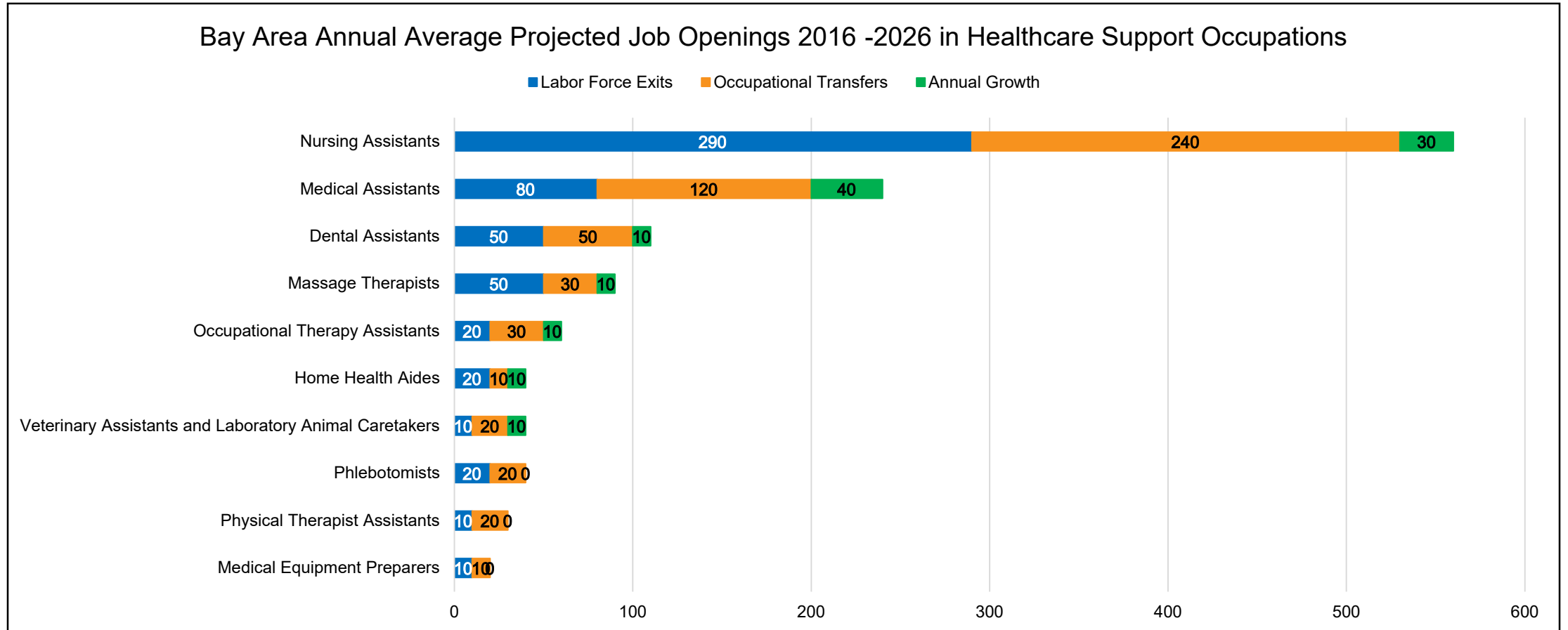
Occupation	Employment	Mean Wages
Total, All Occupations	429,180	\$21.68
Healthcare Practitioners and Technical Occupations	22,290	\$36
Registered Nurses	7,940	\$31.84
Licensed Practical and Licensed Vocational Nurses	1,380	\$20.25
Pharmacy Technicians	900	\$14.90
Dental Hygienists	850	\$30.09
Physicians and Surgeons, All Other	760	\$120.86
Medical Records and Health Information Technicians	760	\$19.42
Emergency Medical Technicians and Paramedics	710	\$15.47
Radiologic Technologists	610	\$26.48
Physical Therapists	580	\$42.26
Pharmacists	570	\$62.85

Data shows top 10 largest production occupations

Source: Occupational Employment Statistics (OES), Bureau of Labor Statistics (BLS)



Healthcare Support Openings



Source: OEA Projections, 2016-2026



Healthcare Support Wages

Occupation	Employment	Mean Wages	Entry wage
Total, All Occupations	429,180	\$21.68	\$10.82
Healthcare Support Occupations	9,820	\$15.26	\$11.40
Nursing Assistants	4,630	\$13.84	\$11.47
Medical Assistants	1,370	\$16.98	\$14.05
Dental Assistants	890	\$18.98	\$14.80
Home Health Aides	840	\$11.32	\$8.86
Occupational Therapy Assistants	410	\$14.28	\$11.31
Phlebotomists	310	\$17.47	\$14.02
Physical Therapist Assistants	240	\$26.48	\$20.86
Massage Therapists	240	\$20.34	\$9.83
Healthcare Support Workers, All Other	210	\$16.80	\$13.52
Veterinary Assistants and Laboratory Animal Caretakers	170	\$13.03	\$10

Data shows top 10 largest production occupations

Source: Occupational Employment Statistics (OES), Bureau of Labor Statistics (BLS)



WISCONSIN



DWD

Questions?

Ryan Long

Regional Economist

Ryan.Long@dwd.Wisconsin.gov

920 - 448 - 5268