

WISCONSIN

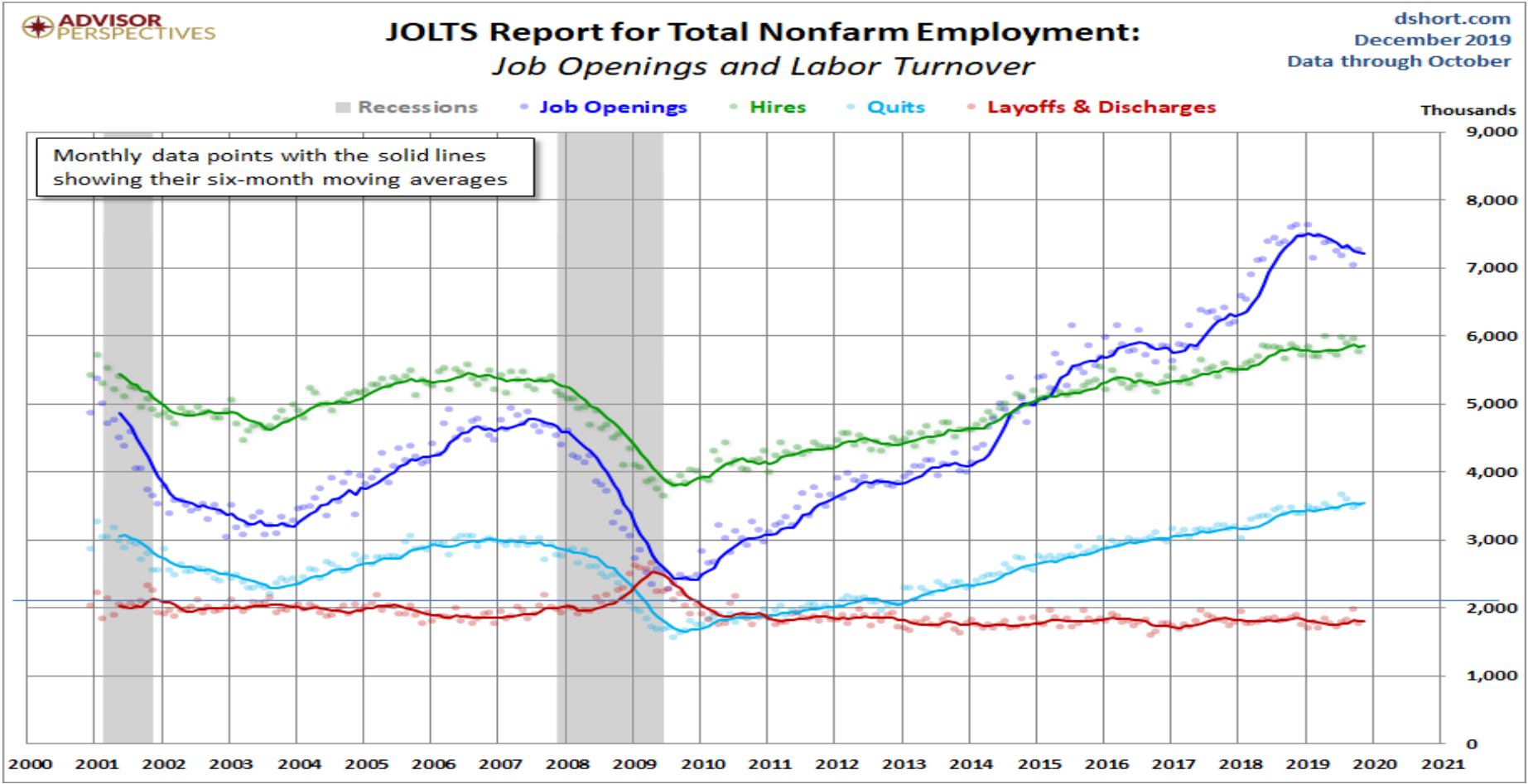


DWD

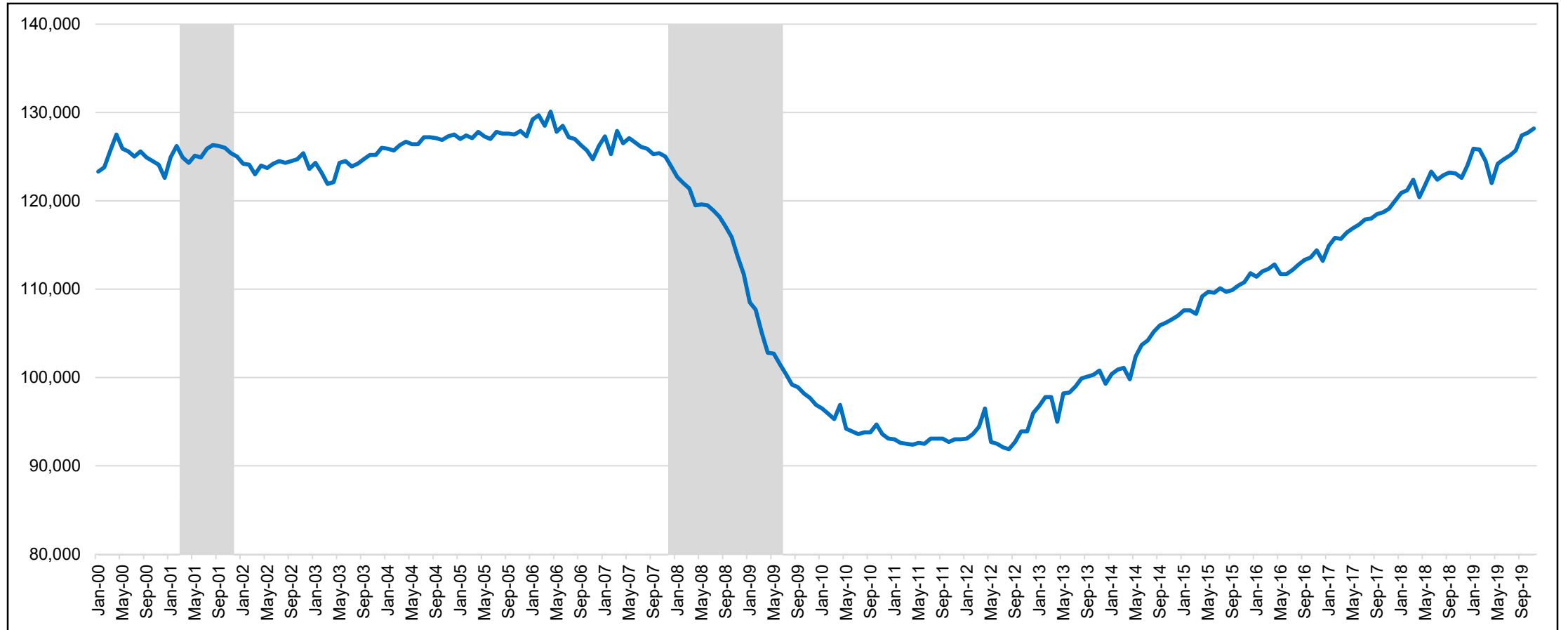
Regional Construction LMI

Ryan Long
Regional Economist

How Employment is Tracking



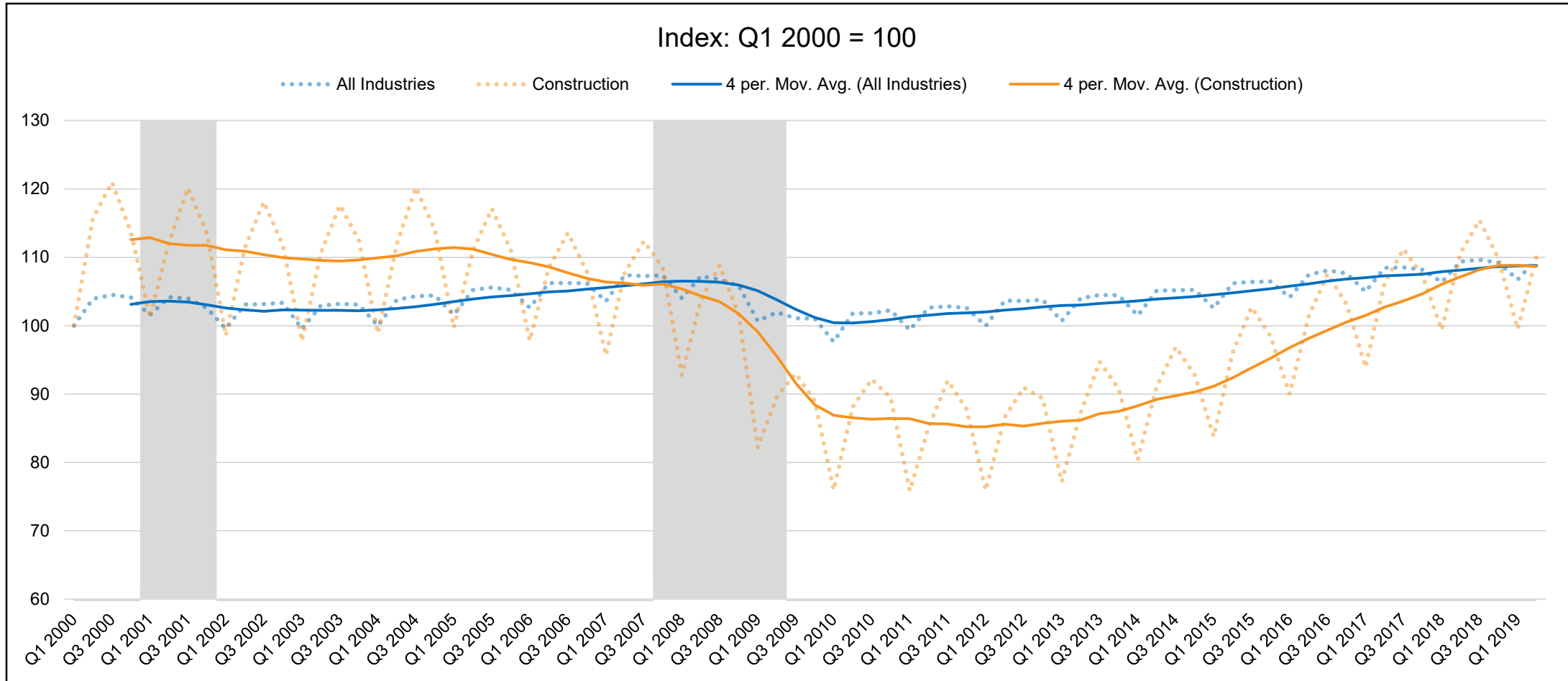
WI Construction Employment



Source: Current Employment Statistics (CES), Bureau of Labor Statistics (BLS)



NEW Employment: Construction vs. All

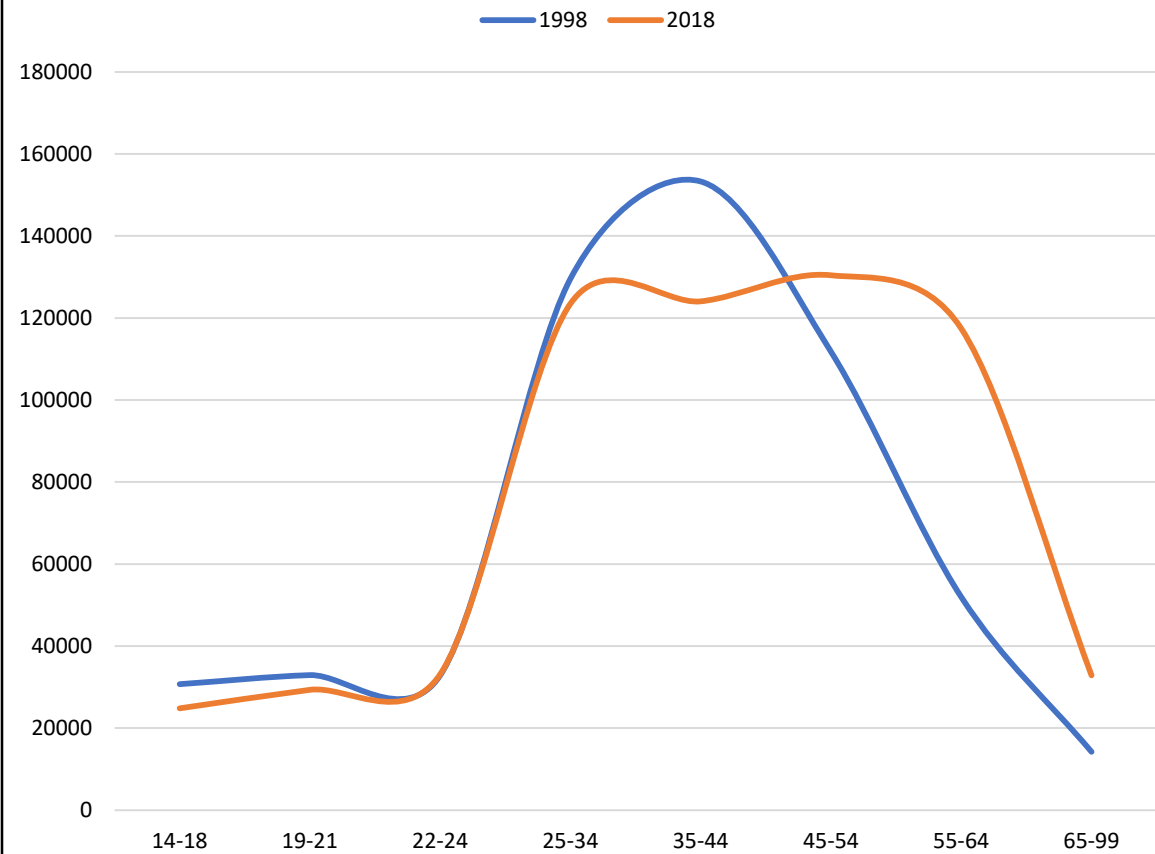


Source: Quarterly Census of Employment and Wages (QCEW), Bureau of Labor Statistics (BLS). NEW refers to the 18 counties that make up the New North EDO. However, data does not include Menominee, Florence, Marquette, and Shawano Counties due to data availability over the time series

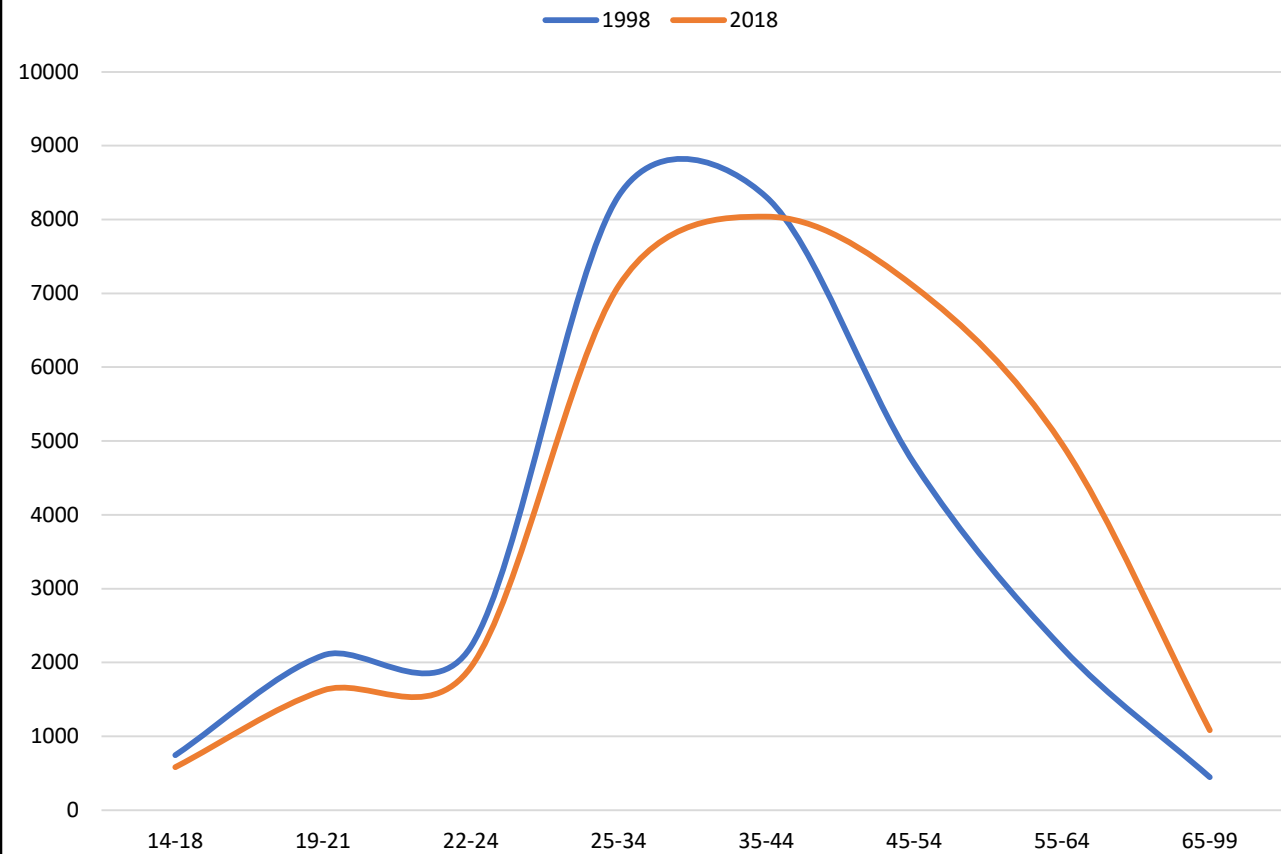


NEW Industry Age Distributions

Age of NEW Workforce, All Industries



Age of NEW Construction Workers



Source: Quarterly Workforce Indicators (QWI), US Census Bureau LEHD



NEW Demographics - Gender

NEW	Gender (%)	
	Male	Female
Overall Labor Force	52.7%	47.3%
Construction Industry	89.1%	10.9%

"Labor Force" includes employed and unemployed. "Construction Industry" includes employed. "White" refers to White Non-Hispanic.
NEW comprises the 18 counties that make up The New North EDO
Source: IPUMS Online Data Analysis System (2018 1-YR American Community Survey); IPUMS-USA, University of Minnesota, www.ipums.org



NEW Demographics – Race/ Ethnicity

NEW	Race/Ethnicity (%)				
	White	Hispanic or Latino	Black or African American	American Indian or Alaska Native	Chinese, Japanese, Other Asian or Pacific Islander
Overall Labor Force	89.0%	4.6%	1.3%	1.6%	2.2%
Construction Industry	92.2%	1.8%	1.3%	2.9%	0.7%

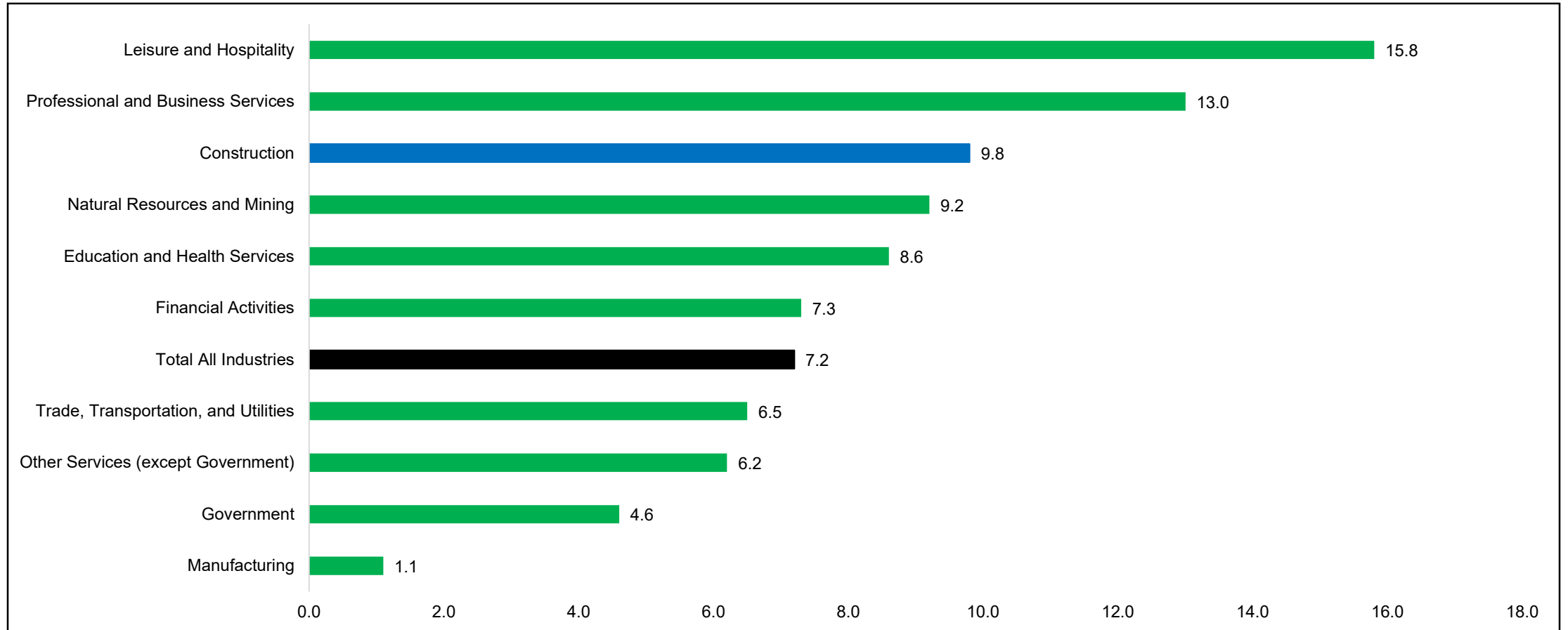
“Labor Force” includes employed and unemployed. “Construction Industry ” includes employed. “White” refers to White Non -Hispanic.

NEW comprises the 18 counties that make up The New North EDO

Source: IPUMS Online Data Analysis System (2018 1 -YR American Community Survey); IPUMS -USA, University of Minnesota, www.ipums.org



Bay Area Employment Projections

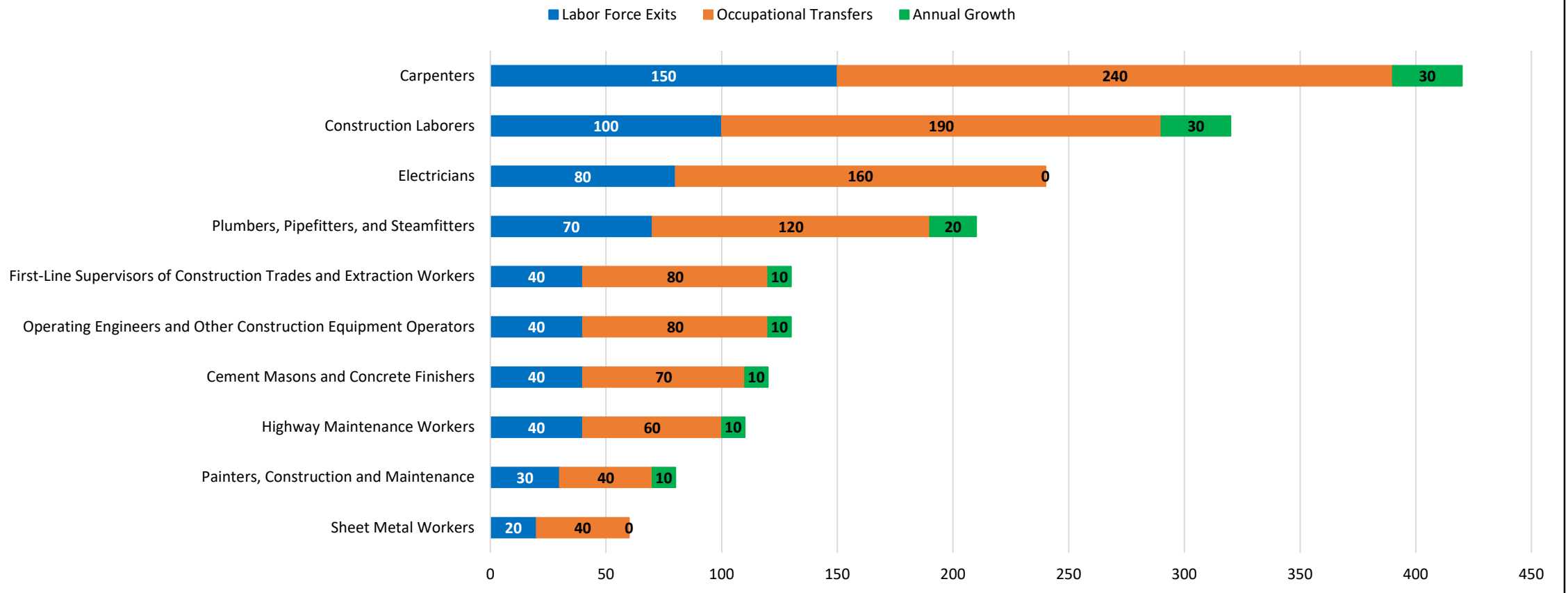


Source: OEA Projections, 2016-2026 (Excludes Information)



Bay Area Construction – Openings

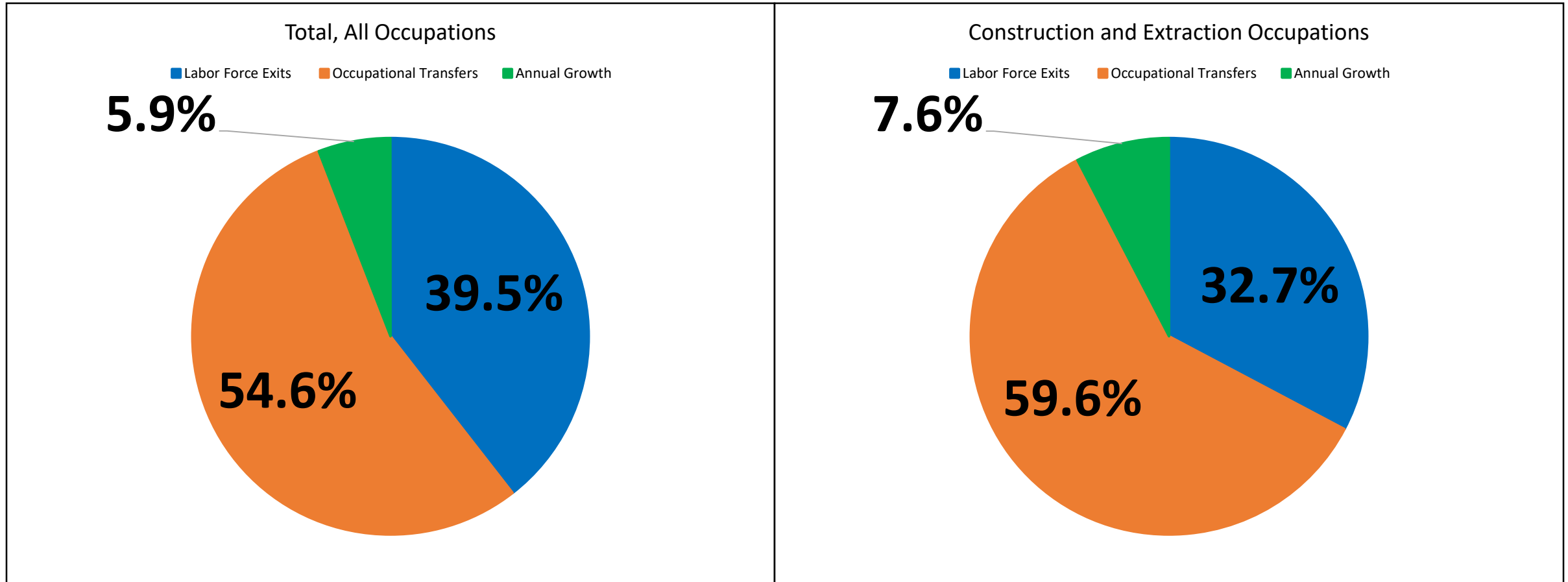
Bay Area Annual Average Projected Job Openings 2016-2026 in Construction and Extraction Occupations



Source: OEA Projections, 2016-2026



Sources of Job Openings



Source: OEA Projections, 2016-2026



Bay Area Construction Wages

Occupation	Employment	Median Hourly Wage
Total, All Occupations	429,180	\$18.01
Construction and Extraction Occupations	18,500	\$23.27
Construction Laborers	2,770	\$17.76
Carpenters	2,500	\$22.02
Electricians	2,240	\$27.31
Plumbers, Pipefitters, and Steamfitters	1,680	\$30.41
Supervisors of Construction and Extraction Workers	1,580	\$32.56
Operating Engineers and Other Construction Equipment Operators	1,230	\$28.81
Cement Masons and Concrete Finishers	1,110	\$22.09
Highway Maintenance Workers	960	\$20.60
Sheet Metal Workers	670	\$23.98
Painters, Construction and Maintenance	540	\$20.21

Data shows top 10 largest construction and extraction occupations
 Source: Occupational Employment Statistics (OES), Bureau of Labor Statistics (BLS)



WISCONSIN



DWD

Questions?

Ryan Long

Regional Economist

Ryan.Long@dwd.Wisconsin.gov

920 - 448 - 5268